

# *Greater Baltimore Wilderness Coalition*



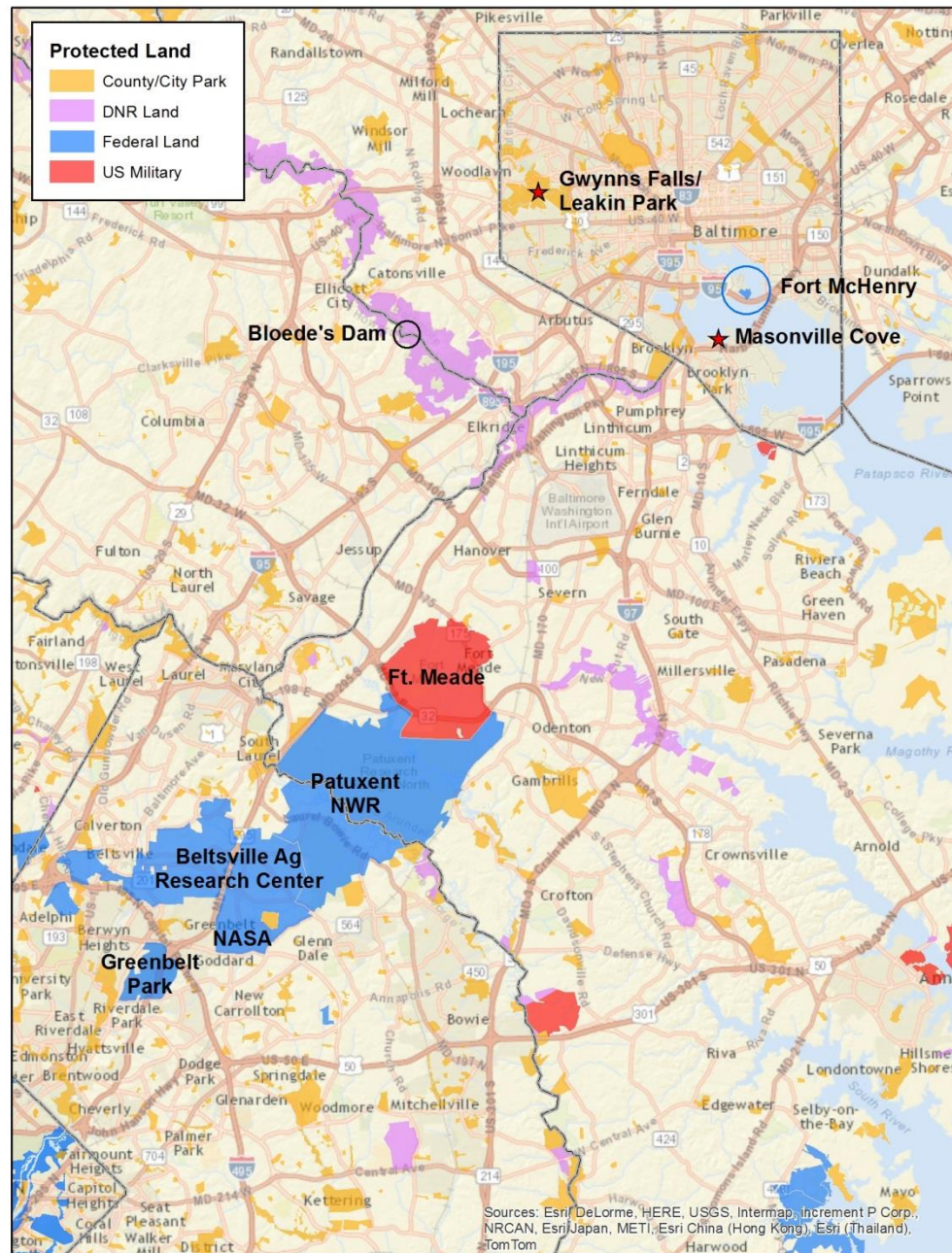
Genevieve LaRouche, Project Leader  
U.S. Fish and Wildlife Service  
Chesapeake Bay Field Office

# Greater Baltimore Wilderness Coalition:

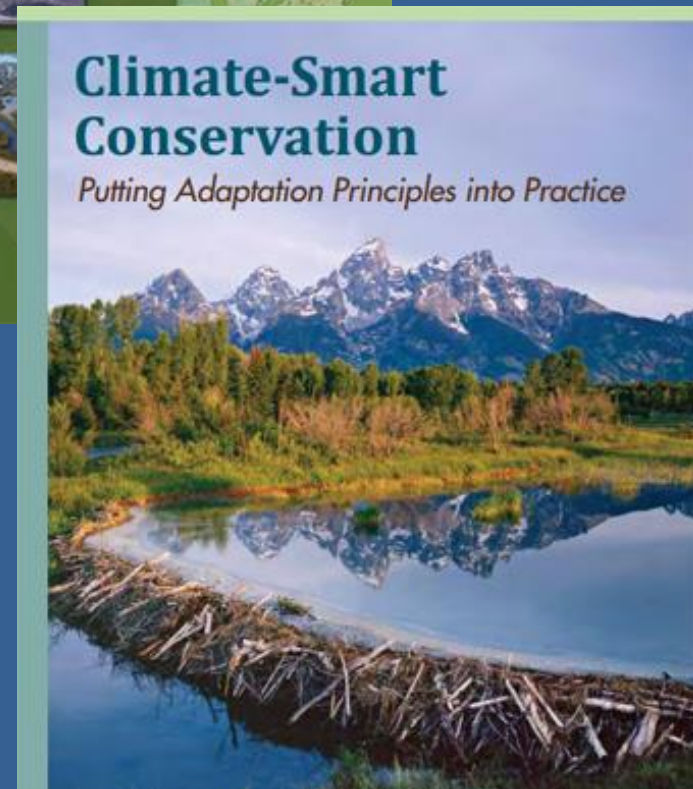
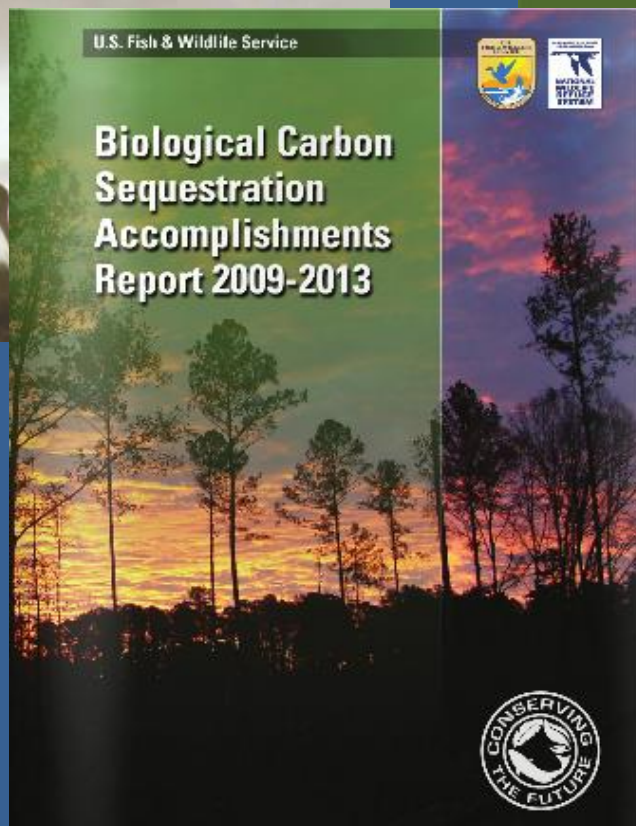
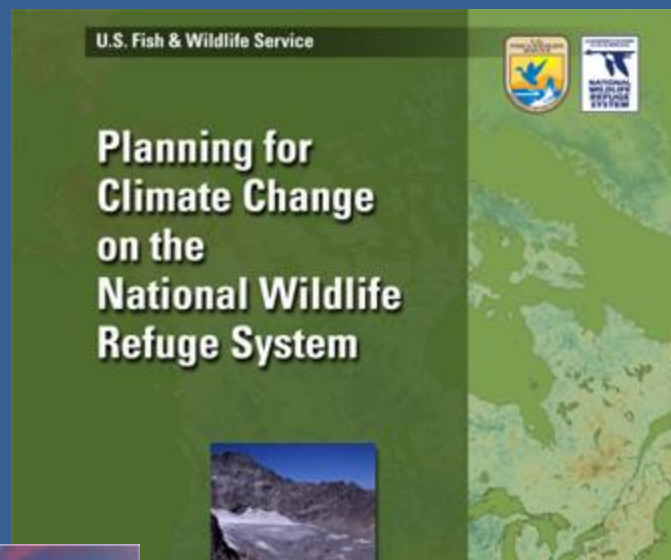
## Strengthening community connections to nature in the Greater Baltimore region

- Resilience
- Biodiversity
- Equity
- Discovery









# Implementing Resiliency Projects

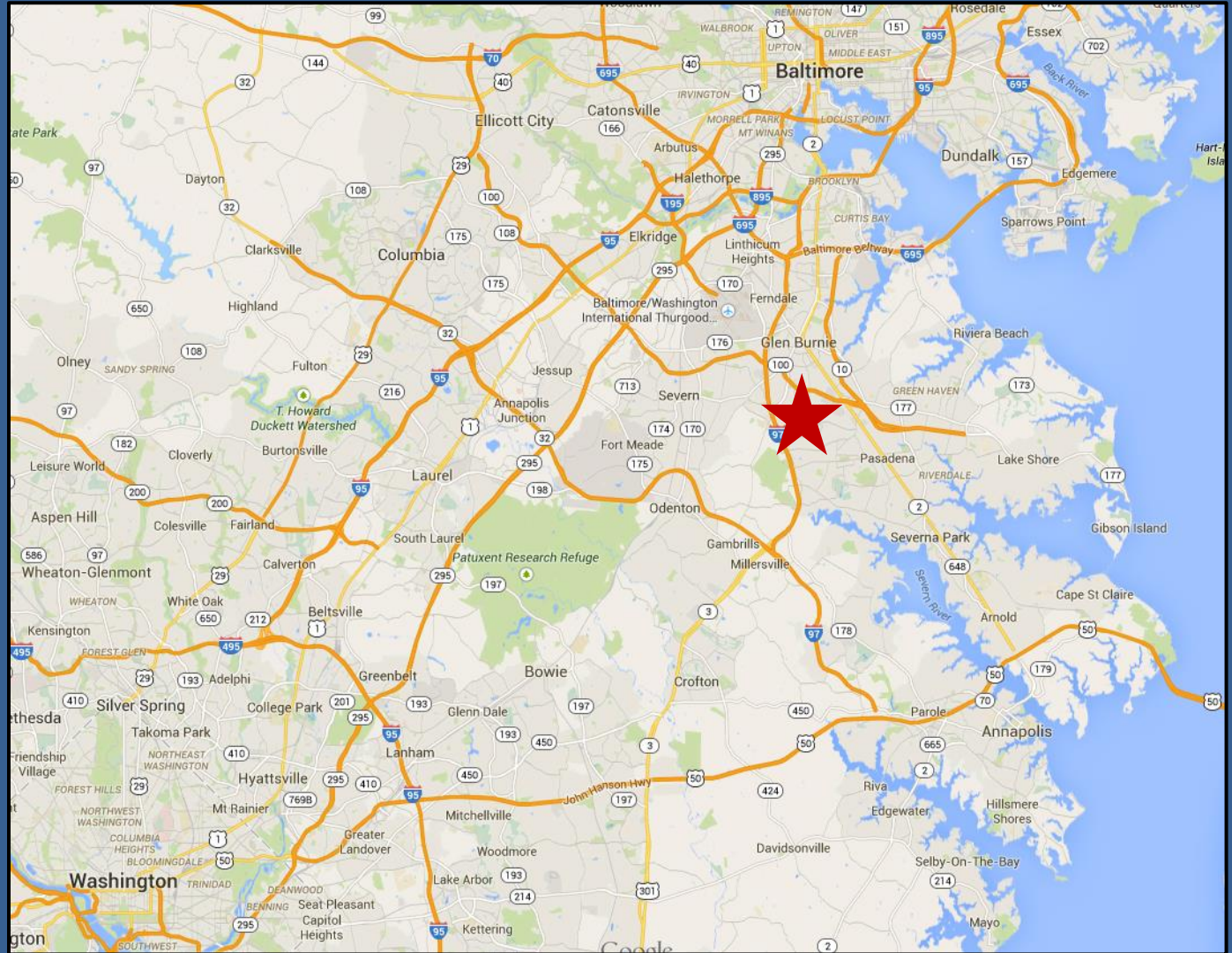
## Stream Restoration

# South River Greenway

- 10,000 acres of forest
- 1,200 acres currently preserved
- Coastal Plain

## Partners

- USFWS
- Anne Arundel County, MD
- Scenic River Land Trust





# Difficulties With Implementation

- Numerous head-cuts
- 100 miles of stream in need of restoration
- Cost
- Funding
- Staff Time



# Headcut Stabilization



- Initiates Self Recovery
- Protects Channel Upstream From Down-cutting
- Reduced Cost
- Basin-wide Approach
- Reduced Permitting
- Reduced Sedimentation
- Improved Water Quality
- Reduced Disturbance of Riparian Area



# Before and After





# After



# Equity and the Urban Wildlife Refuge Initiative

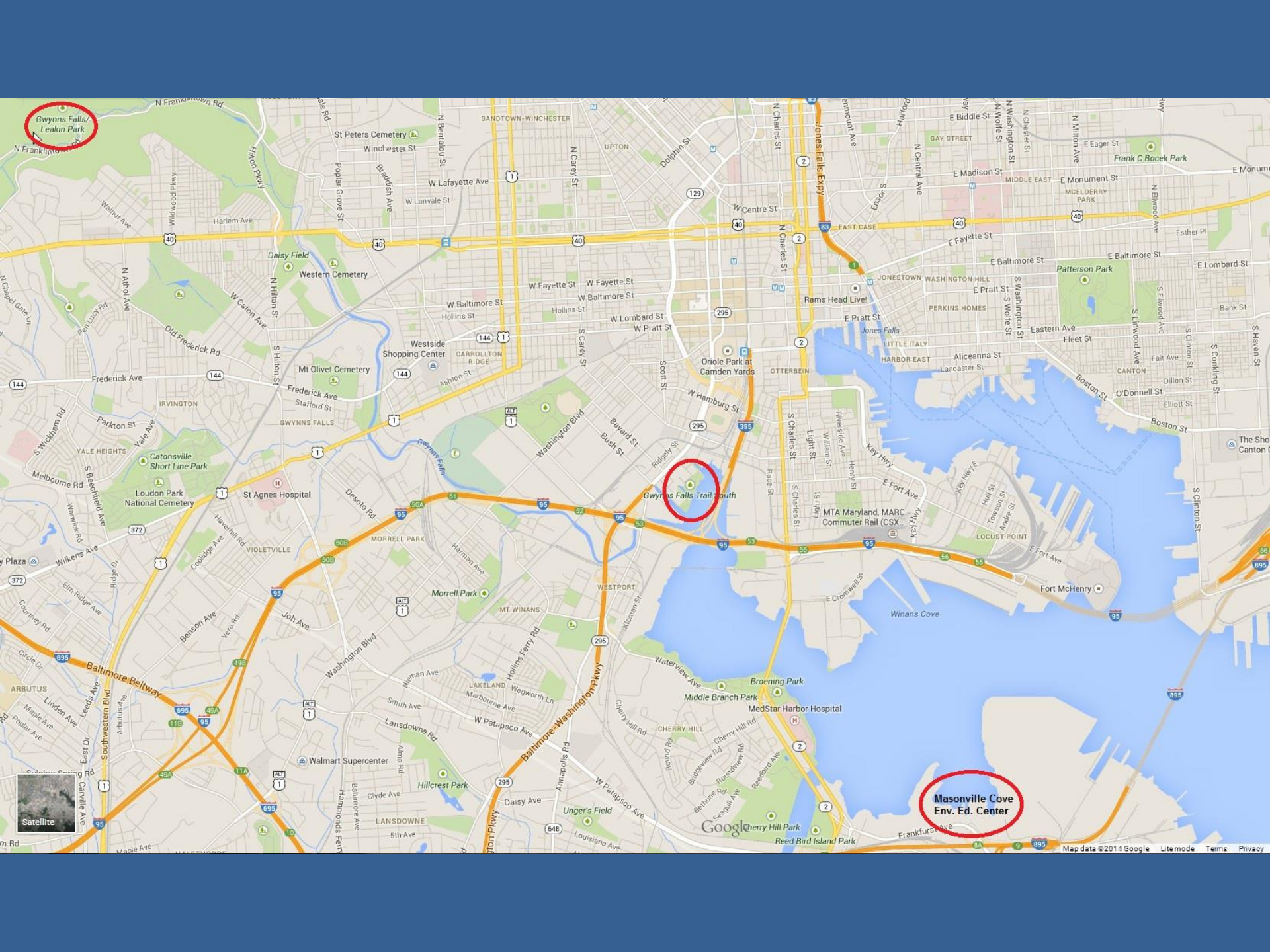


- Engage communities where we aren't present
- Nurture appreciation for wildlife conservation

Where:

- We don't currently have an urban refuge
- Significant population center
- Opportunities to leverage other efforts





Gwynns Falls Leakin Park

Gwynns Falls Trail South

Masonville Cove Env. Ed. Center





# Baltimore

## Inner Harbor



## The Masonville Project





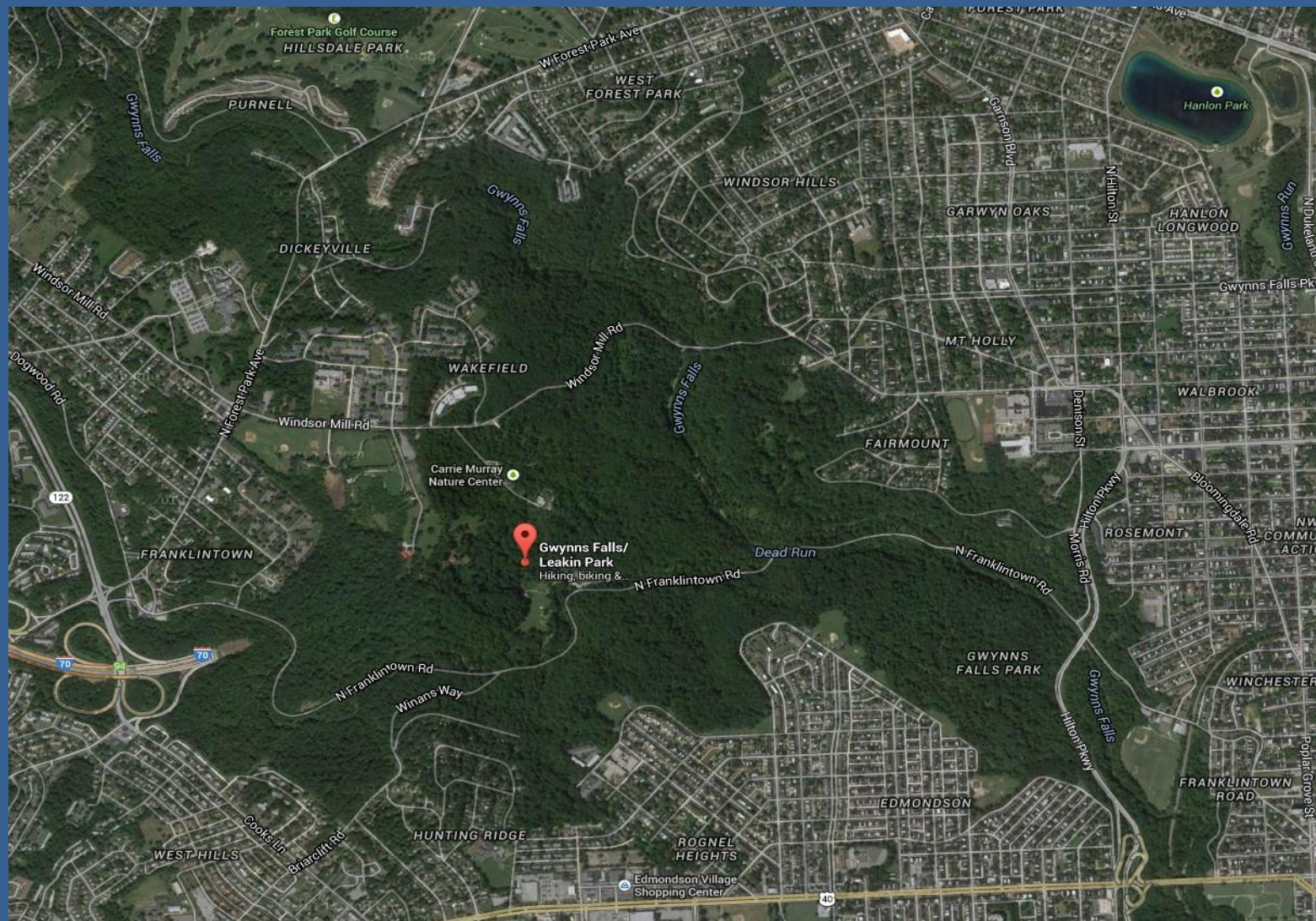
# Masonville Cove Environmental Education Center

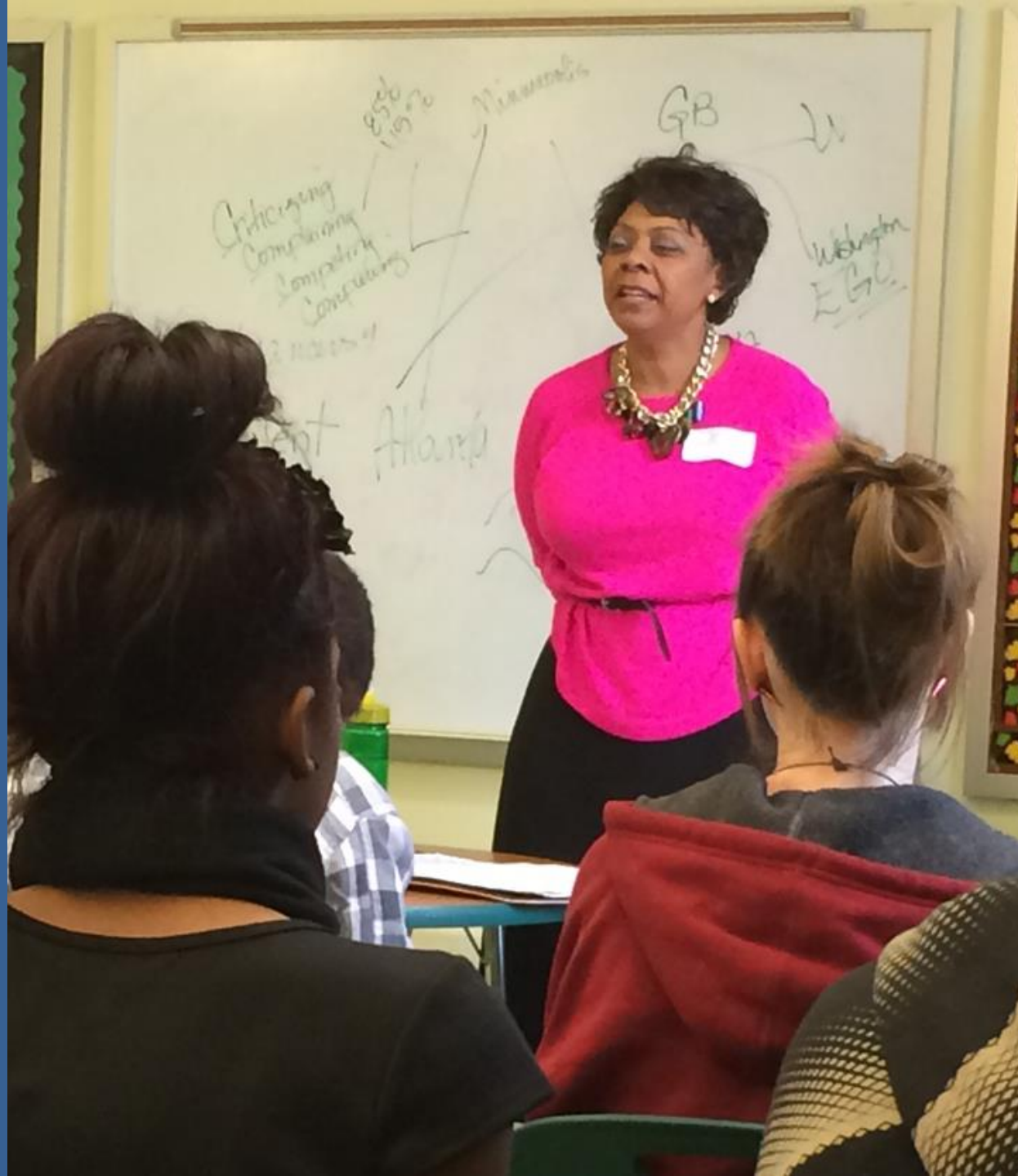
























# Looking Ahead

